



## Dashboard LOC Levels

Telegram:-<https://t.me/Stocksoptionblaster>  
YouTube:- <https://youtube.com/@Stockoptionblaster>

## Level Which works Dot to dot

When stocks hit their support levels, they tend to bounce back, providing a good buying opportunity for investors. This is because the support level, or *LOC* acts as a price point where buying interest is strong enough to prevent the price from falling further.

Importantly, these *LOC* levels are not just arbitrary figures; they are well-calculated levels derived from comprehensive analysis of market dynamics, including historical price movements, trading volumes, and other technical indicators.

During the election, the stock market experienced a significant fall, with many stocks reaching their levels of support at the line of control (*LOC*) and bounce from these levels. This is exactly phenomenon what we read in textbook of "buying on the dip".

AixsBank



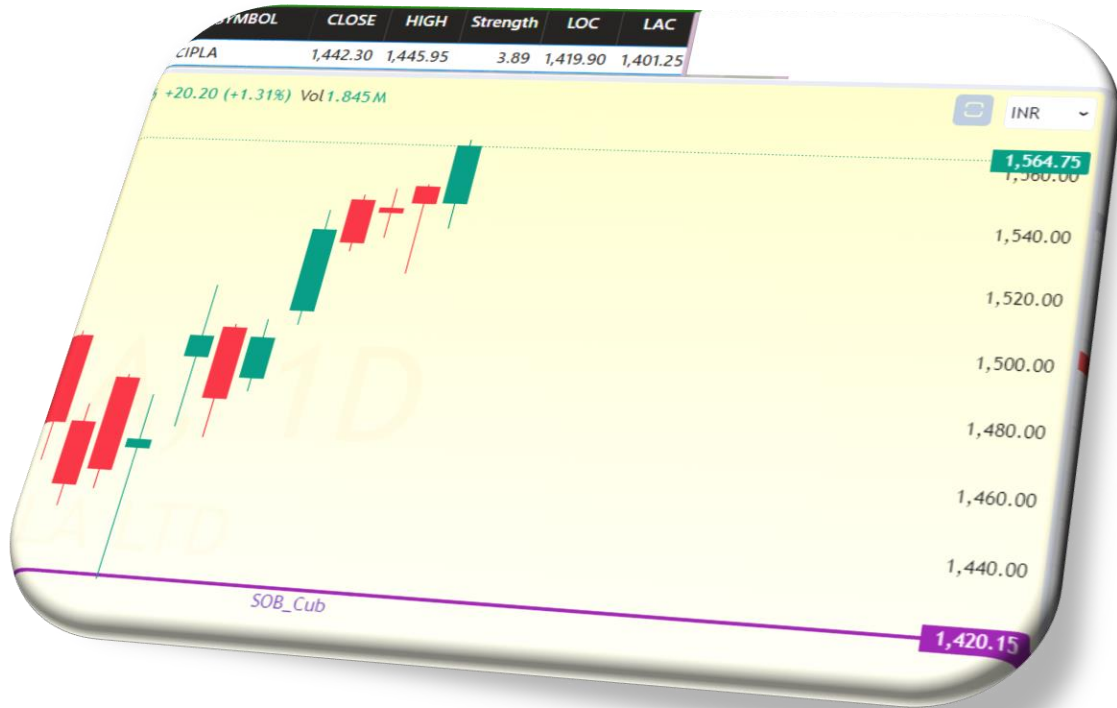
BEL



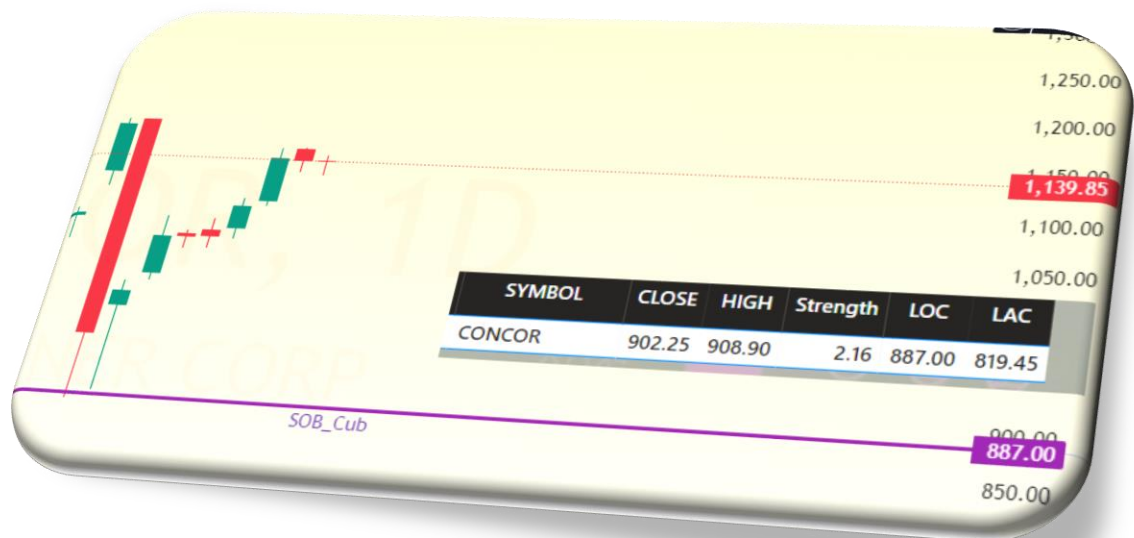
Bhartiartl



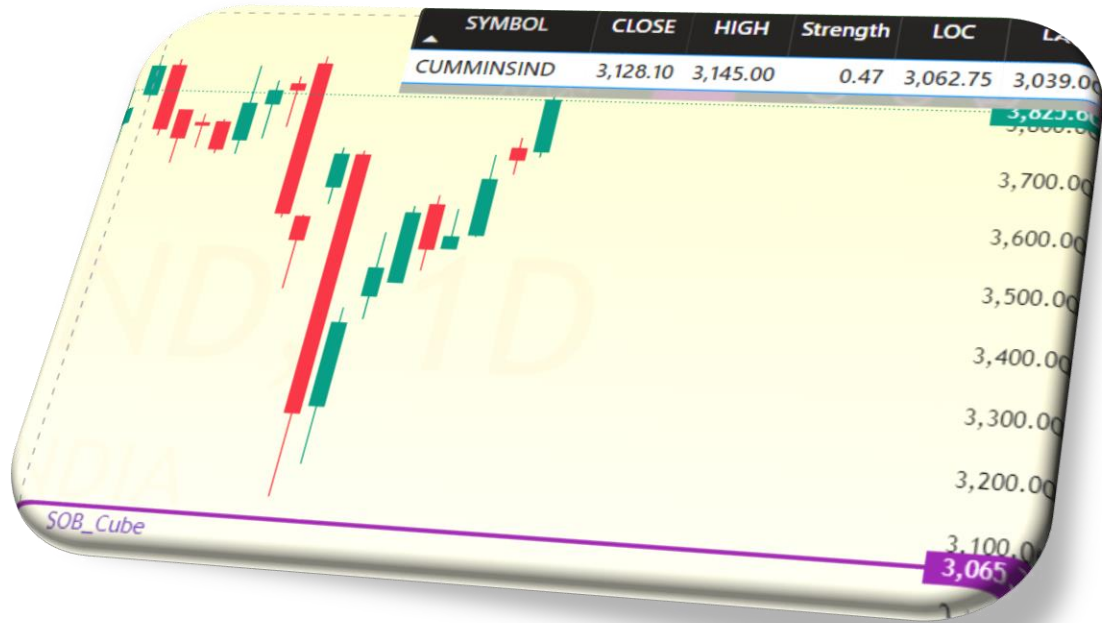
Cipla



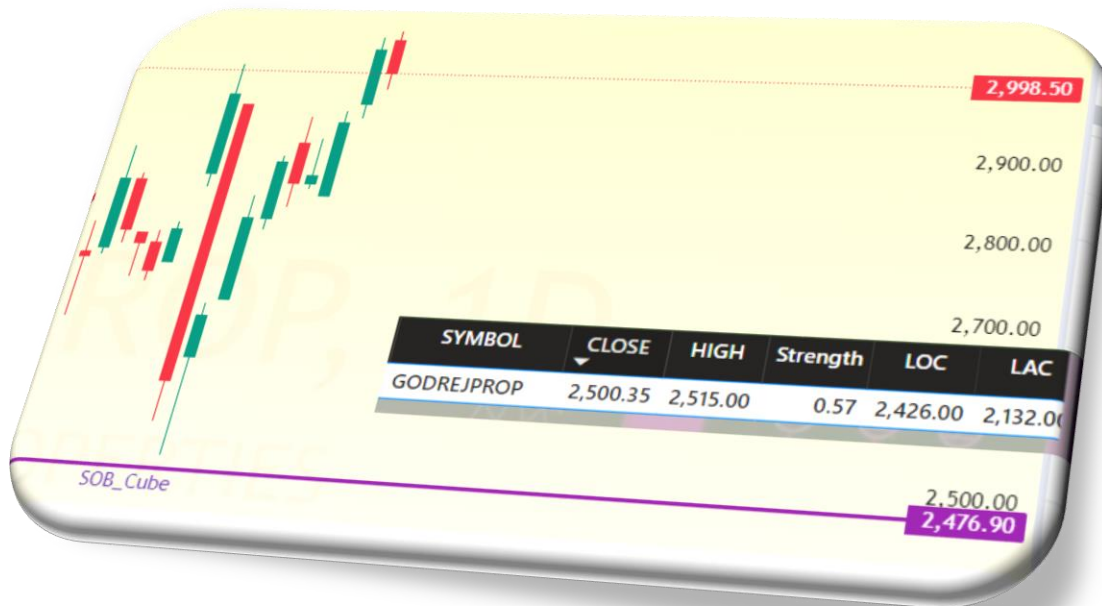
Concor



Cumminsind



Godrejprop



HDFCBank



Hindcopper



IEX



Indigo



JindalStel



Lauruslabs





Nationalum



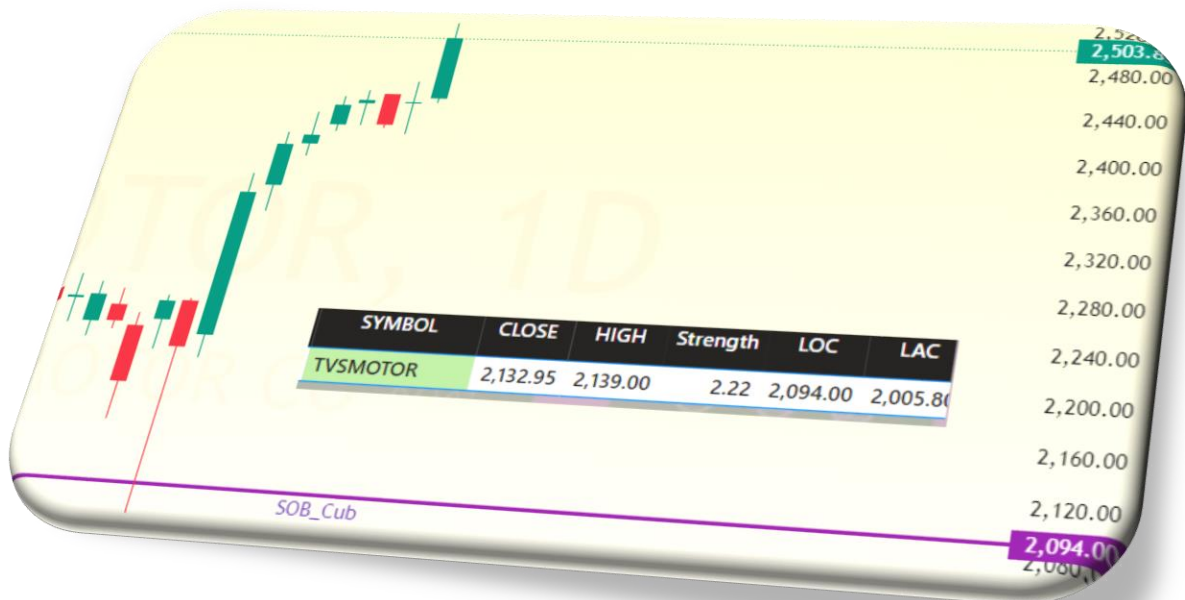
PFC



SBIN



TVSMotor



Ultracemco



Voltas



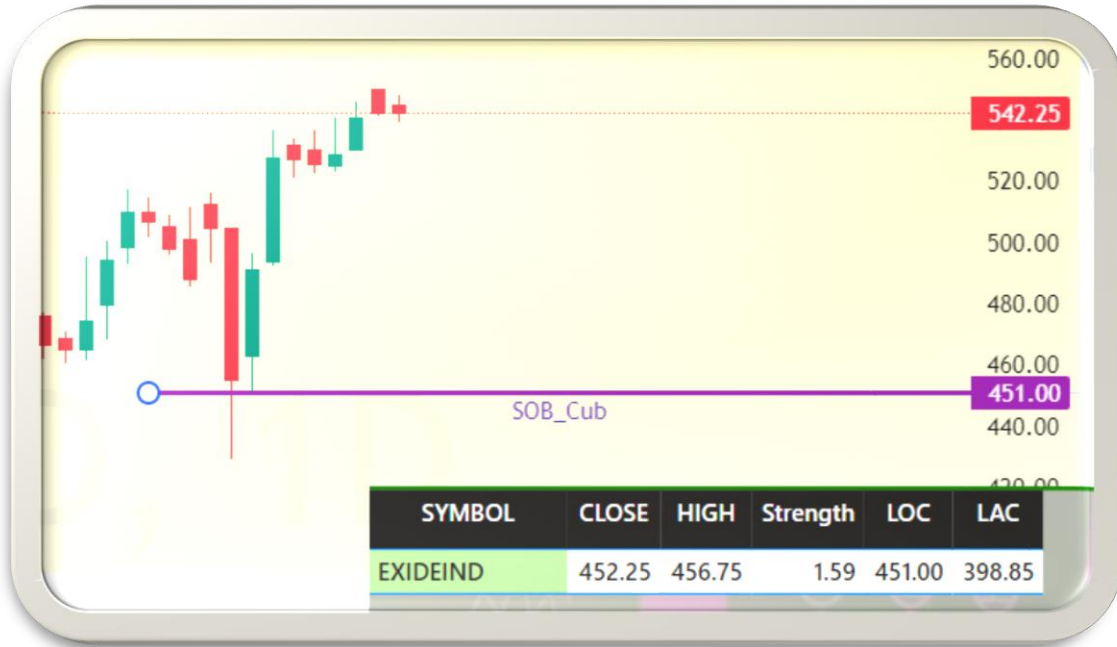
### LOC STILL HAVE CHARM :-

*In this case, the election-induced market volatility created a textbook example of "buying on the dip." Investors who recognized these support levels were able to buy stocks at a discount, ultimately profiting as the prices bounced back. The fact that these LOC levels held strong during the fall demonstrates their robustness and reliability, reinforcing the idea that they are critical points based on thorough market analysis. This strategy is effective because it allows investors to enter the market at lower prices and take advantage of the natural recovery process, making it a powerful tool for achieving gains in a fluctuating market.*

Bajaj-Auto



Exideind



Glenmark



Grasim



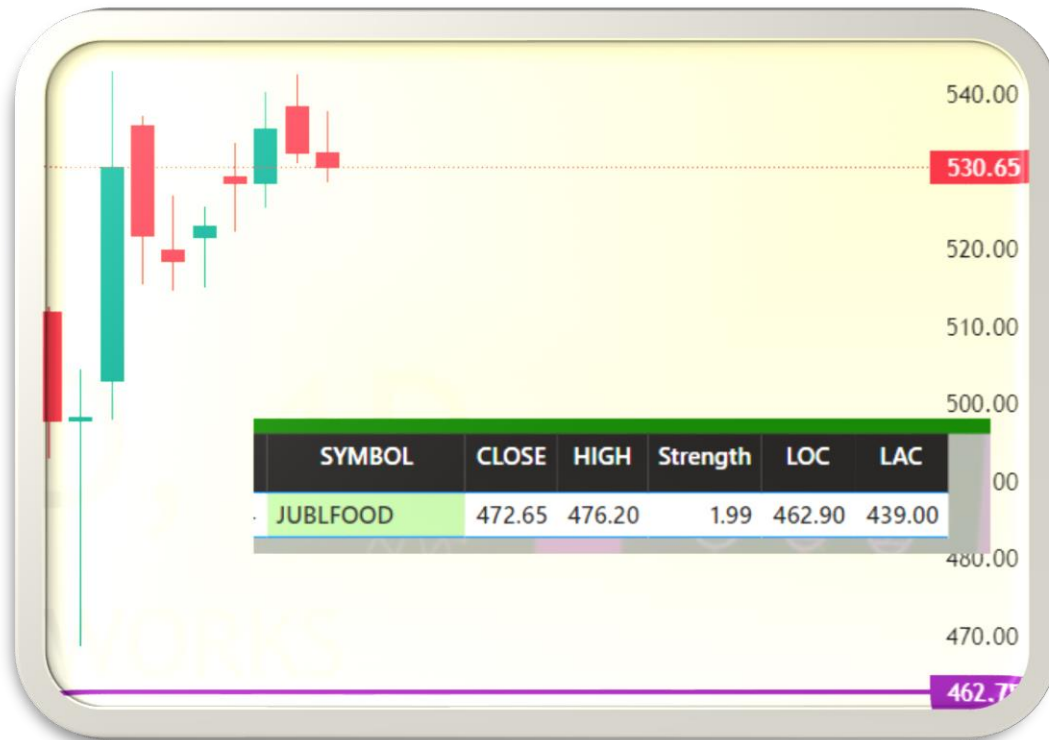
Hindalco



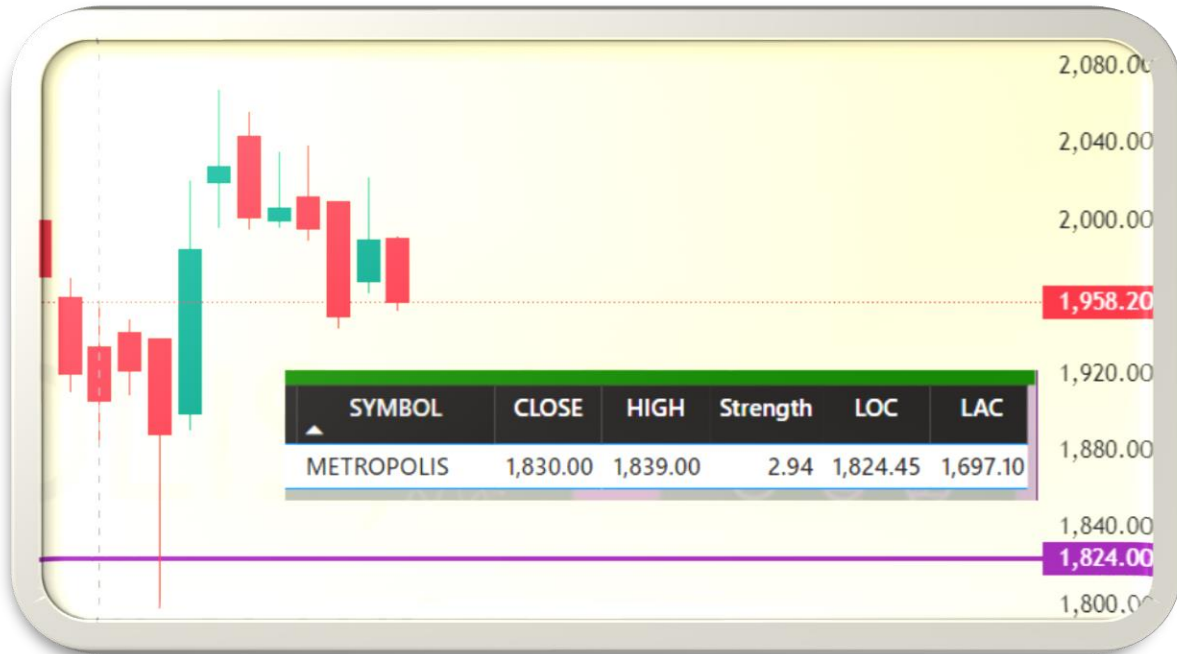
## Hindpetro



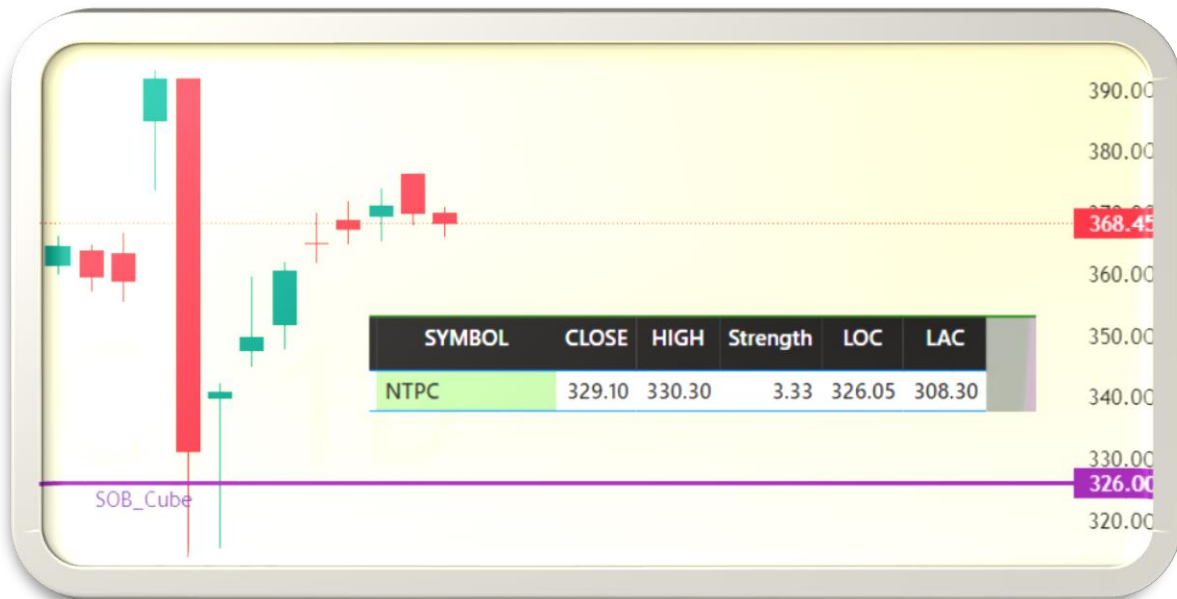
## Junlfood



### Metropolis

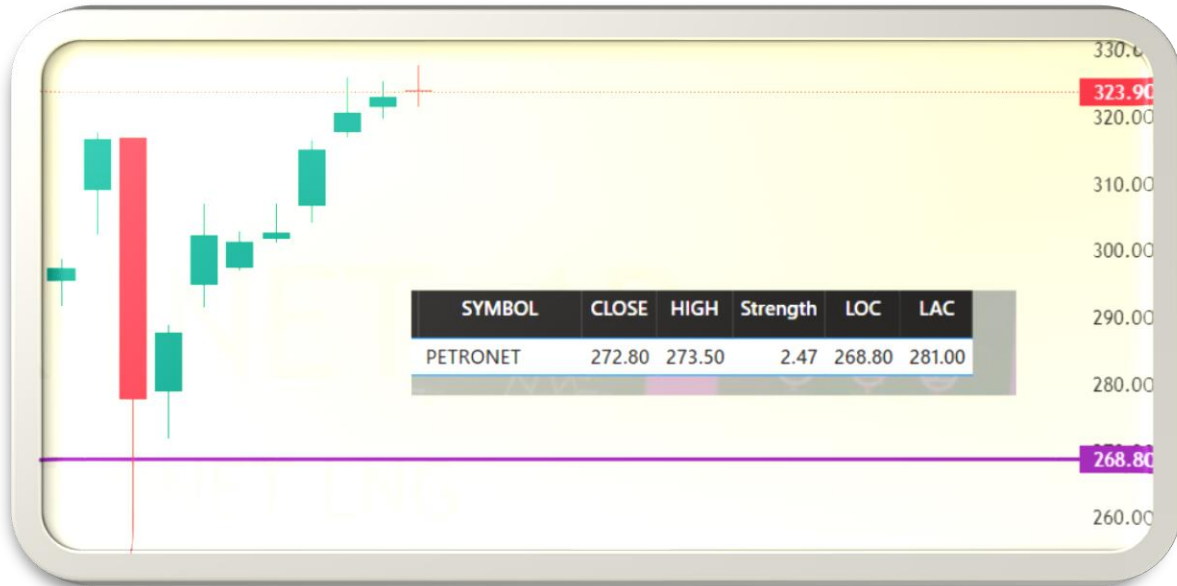


### NTPC





Petronet



Powergrid



### RBLBank



### TataPower



Zyduslife

